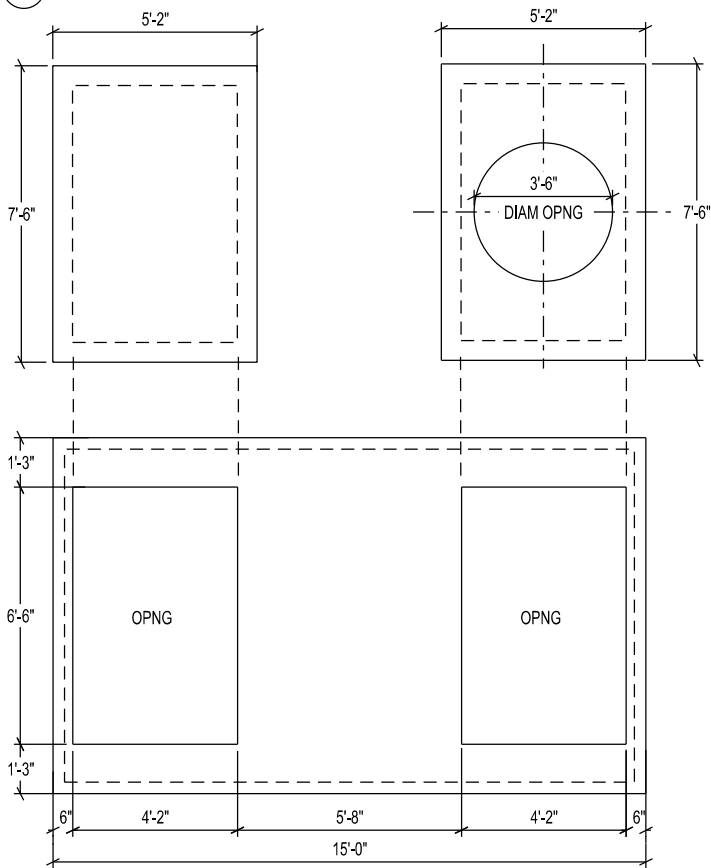
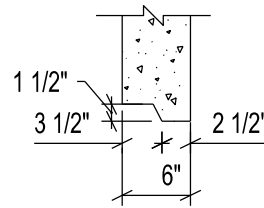


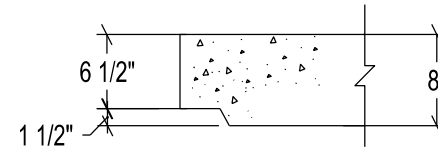
6 LID SECTION



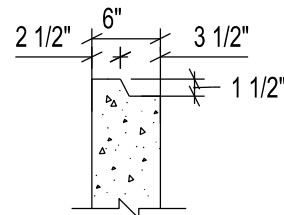
PLAN - LID



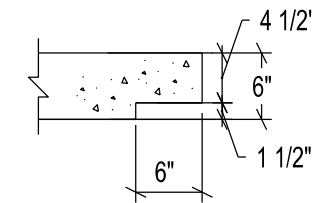
C UPPER WALL DETAIL



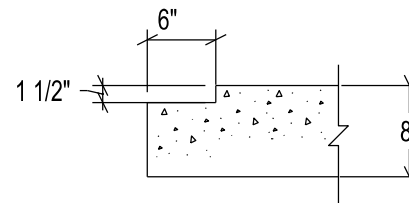
D LID DETAIL



B LOWER WALL DETAIL  
UPPER WALL DETAIL



E COVER DETAIL



A BASE DETAIL

1. CONCRETE STRENGTH SHALL BE f'c 6000 PSI
2. ALL REBAR SHALL BE ASTM A615 GR. 60

**PCC**

Pre-Cast Concrete Company

11400 Lang Street  
Anchorage, Ak, 99515  
PH (907) 348-6730 FAX (907) 348-6734

PROJECT:

**8'-0 x 14'-0 VAULT LID**

SENT BY:

**DANE SMULICK**

DATE:

CUSTOMER:

DWG:

**2 OF 2**