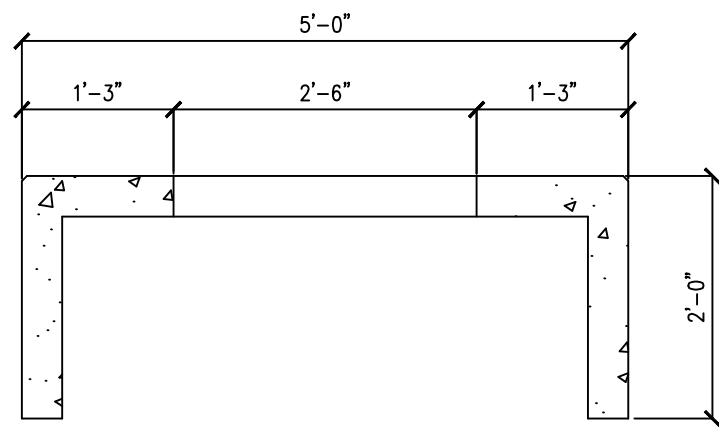
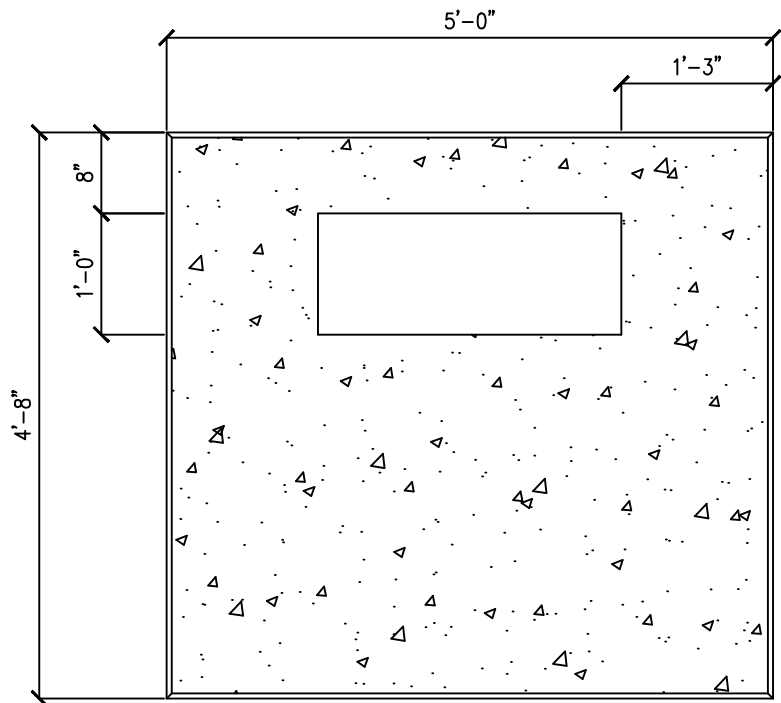




SUM1-A TRANSFORMER PAD



NOTES:

- 6"x6"-W2.9/W2.9-6GA MESH
- 3/4" CHAMFERED EDGES
- WEIGHT: 2,530LBS
- 6000 PSI CONCRETE MIX DESIGN



ALASKA DOT-QPL APPROVED

Date	
Designed	PAUL DUCLOS 1-11-16
Drawn	
Checked	
Approved	

SUM1-A CONCRETE PAD

